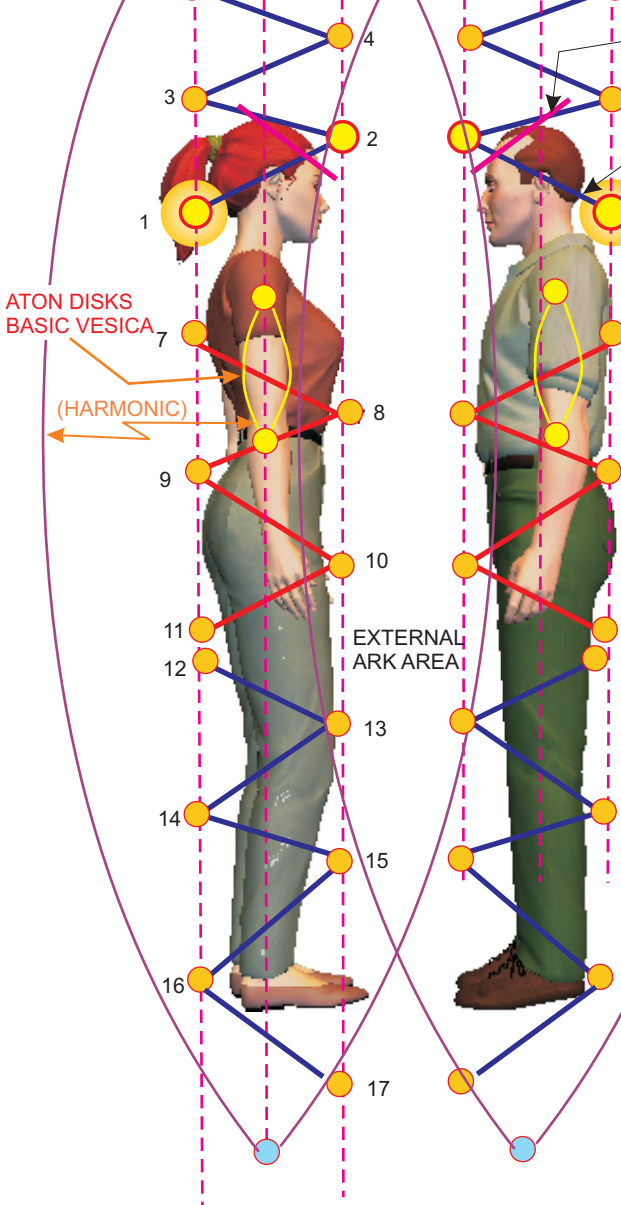


ATON VESICA

TENTATIVE WORKSHEET (UNDER CONSTRUCTION, ROUGH DRAFT)

AXIATONAL TEMPLATE FOR MAZURIEL "POOL OF STARS" RESONANT UNIFICATION.

(USE WITH A DUAL, DIPOLE DIONE COUPLET, WITH INNERPLANES MASTERS FOR NEEDED ENERGY MANAGEMENT, ETC.)

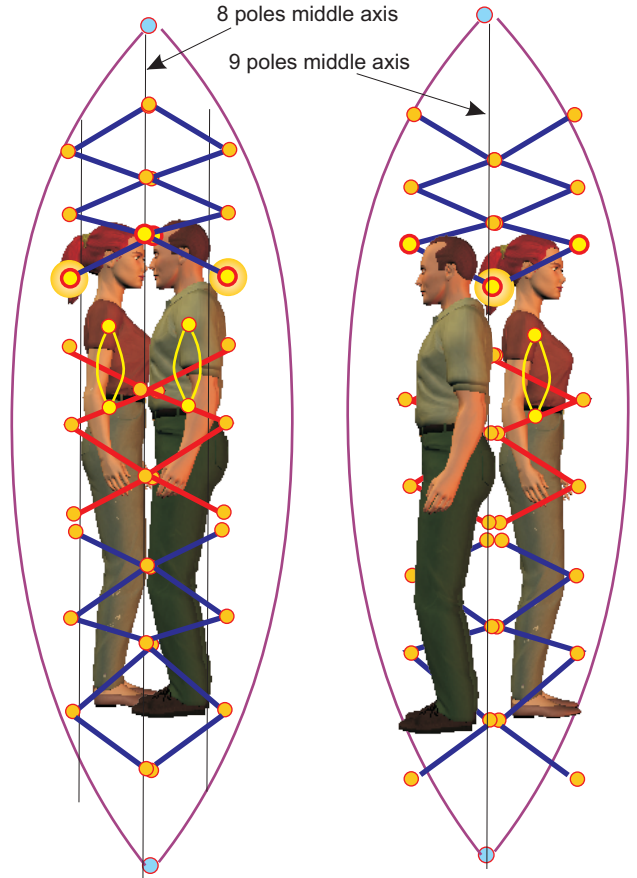


SLOPE THE FOREHEAD (SIMILAR TO INCAN IMAGE)

A KEY ANGLE

BACK OF THE SKULL PIVOTAL

HUMANS MERGE THROUGH AND BACK ETHERICALLY TO GENERATE THE WAVES.



USE THE "I AM THAT I AM" DUAL, DIPOLE DIONE COUPLET FORMAT BY JOINING WITH INNERPLANES MASTERS, MALE AND FEMALE. LET THEM SELECT A POLAR COUNTERPART FOR YOU. IF YOU ARE A MAN YOU WOULD SIT WITH THE MALE MASTER AND VICE VERSA.

THIS IS AN EXAMPLE OF THE DIONE COUPLET FOUND IN THE HEBREW NAME OF GOD: "I AM THAT I AM" OR "EHYE ASHER EHYE."

COUPLET
 אֶהְיֶה אֲשֶׁר אֶהְיֶה

COUPLET
 אֶהְיֶה אֲשֶׁר אֶהְיֶה

אֶהְיֶה אֲשֶׁר אֶהְיֶה אֶהְיֶה אֲשֶׁר אֶהְיֶה אֶהְיֶה אֲשֶׁר אֶהְיֶה

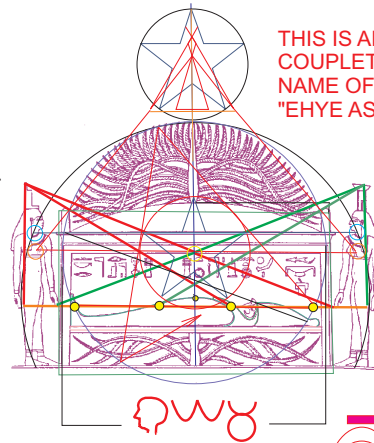
EHYE ASHER EHYE
 HEYA RASHA HEYA

← ASHER

ASHER: TREE, GROVE, SYSTEM OF 10 ...THE TEMPLE OR CREATED FORM.

I AM ... RASHA → ... I AM

VIBRATION, UNDULATION; SHAKE, CHIEF HEAD STONE, TO BE, (LAME KING: NEGATIVE ASPECT: POISON, ERROR.)



SIMPLE DUAL, DIPOLE DIONE COUPLET
 INNER PLANES MASTER (FEMALE)

